

Unit 1: Getting to Know Plants

Book Back Questions

Grade 6 : Science

Exercises:

1. Correct the following statements and rewrite them in your notebook.

- (a) Stem absorbs water and minerals from the soil.
- (b) Leaves hold the plant upright.
- (c) Roots conduct water to the leaves.
- (d) The number of sepals and petals in a flower is always equal.
- (e) If the sepals of a flower are joined together, its petals are also joined together.
- (f) If the petals of a flower are joined together, then the pistil is joined to the petal.

2. Draw (a) a leaf, (b) a tap root and (c) a flower, you have studied for Table 7.3 of the textbook.



Unit 1: Getting to Know Plants

Book Back Questions

Grade 6 : Science

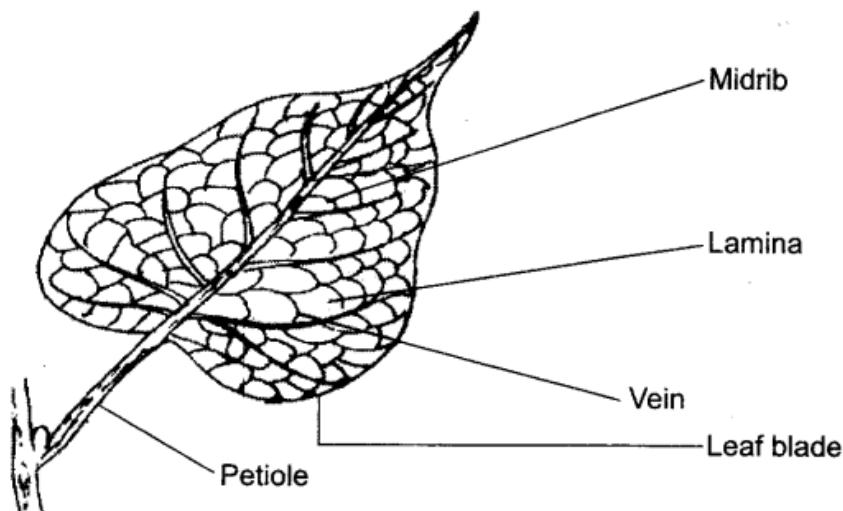
Answers:

1. Correct the following statements and rewrite them in your notebook.

- (a) **Roots** absorb water and minerals from the soil.
- (b) **Roots** hold the plant upright.
- (c) **Stem** conducts water to the leaves.
- (d) The number of petals and sepals in a flower is **usually** equal.
- (e) If the sepals of a flower are joined together, its petals are **not necessarily** joined together.
- (f) If the petals of a flower are joined together, then the pistil is **not necessarily** joined to the petal.

2.

(a) **Leaf:**



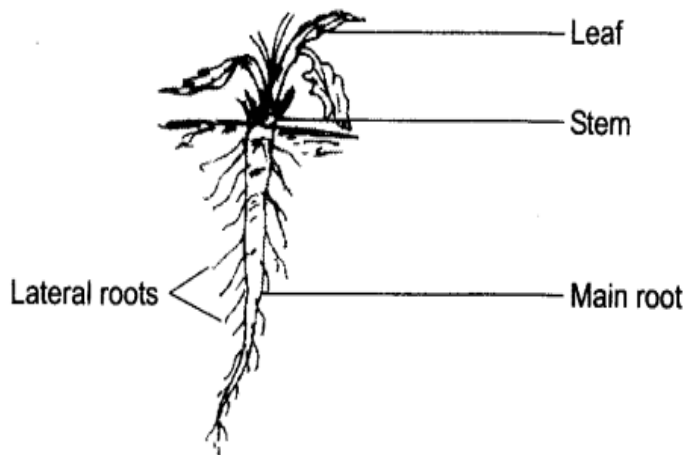
Unit 1: Getting to Know Plants

Book Back Questions

Grade 6 : Science

Answers:

(b) **Tap root:**



(c) **Flower:**

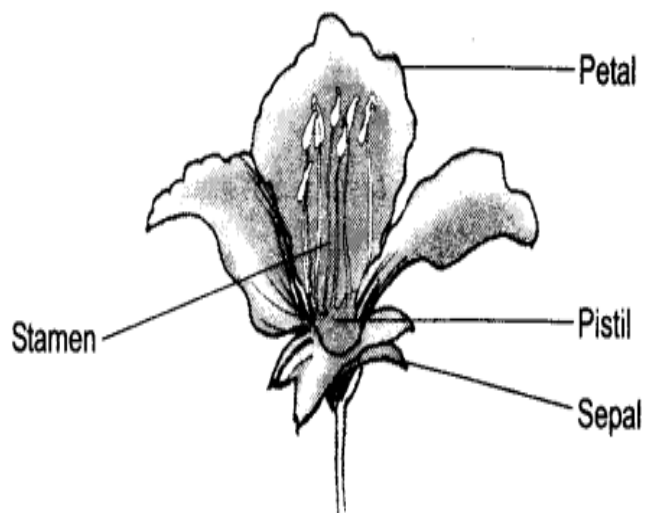


Fig. 7.5



Ayanpolymath

Link: <https://www.instagram.com/ayan.polymath/>



Ayan Polymath

Link:

<https://www.facebook.com/profile.php?id=100094728185263>



@ayan_polymath

Link: https://twitter.com/ayan_polymath



YouTube

Ayan Polymath

Link: <https://www.youtube.com/@MathematicalLogics32/featured>

www.ayanpolymath.com